



Moving Existing Business Rules into JRules

Presented By:

Paul Durfee

Country Insurance & Financial Services

paul.durfee@countryfinancial.com

309-821-6112



My Background

- Began developing Business Rule Systems in 1993
- Experience with Aion; Blaze and JRules
- Have worked on projects at 3 insurance companies and 1 government agency



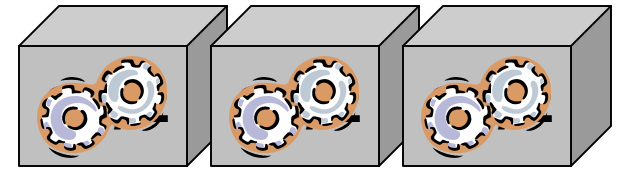
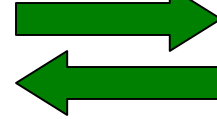
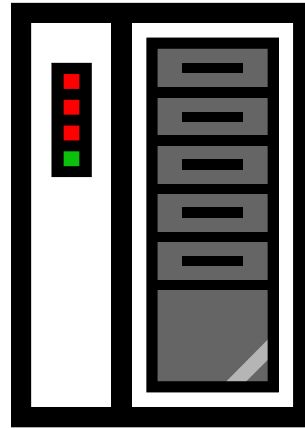
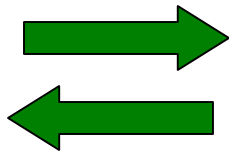
Project Goals

- Share common rules among various processes instead of duplicating rules in separate sets of code
- Place business rules in a supported tool running on a supported platform
- Improve Business Rule run-time performance
- Be able to better use business rules technology in other areas

System Architecture - Before JRules



Agents and Underwriters

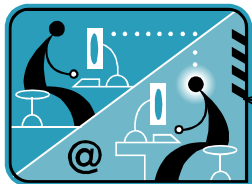


1) Multiple OS/2 Servers, each running Aion v6.40.06

2) Data transported to Aion via proprietary API embedded within COBOL and C++ programs

1) Mainframe CICS/COBOL

2) Aion v6.5 running on mainframe

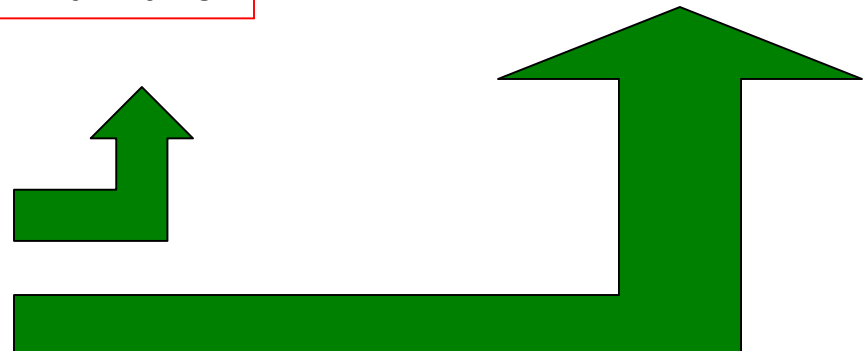


Developers

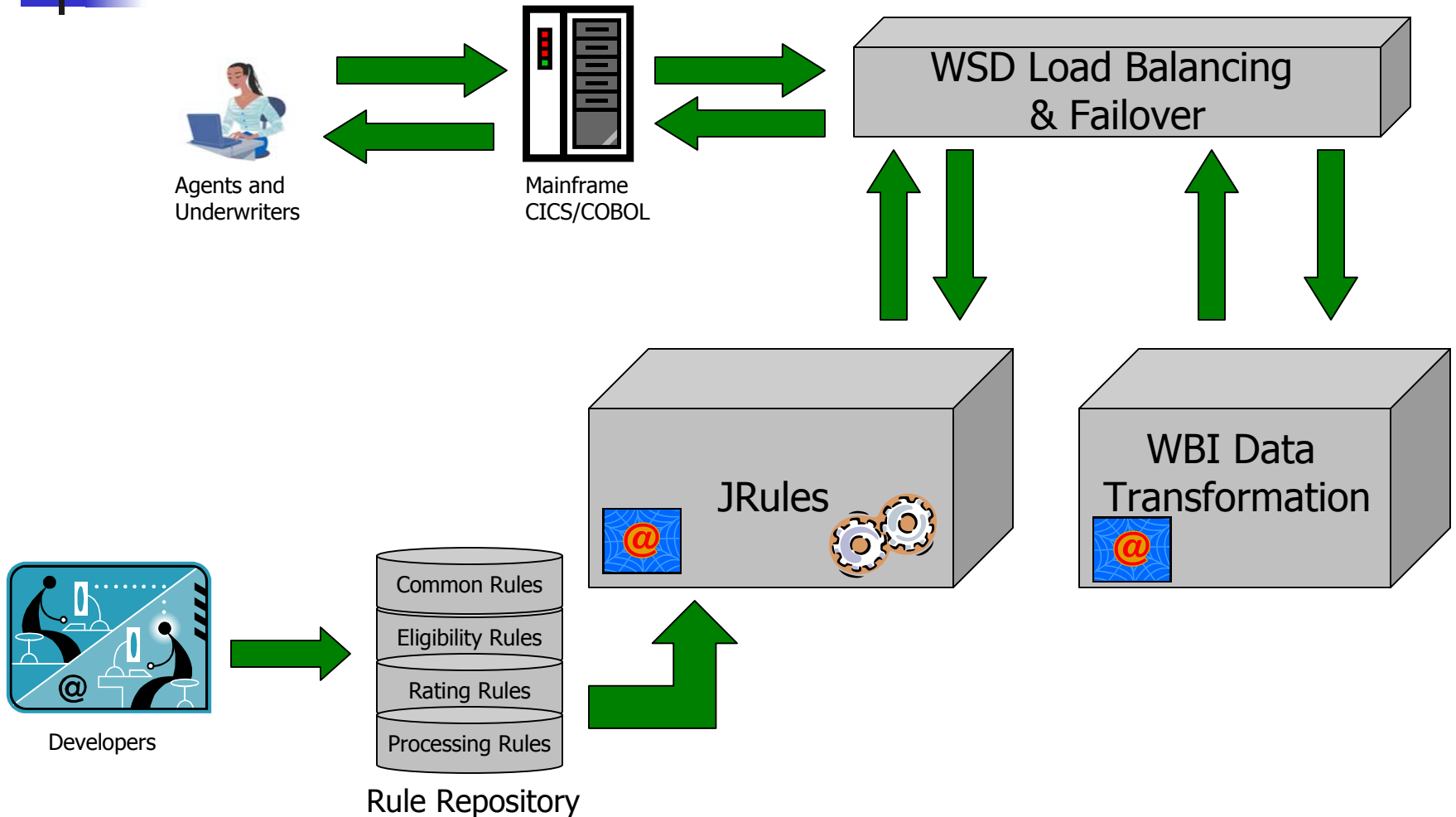
Eligibility Rules

Rating Rules

Processing Rules



JRules Architecture Overview





Architecture Details – page 1

- All data is stored on Mainframe in VSAM files
- All data is read by COBOL and passed to JRules via WBI with one call
- WBI is deployed as a web service
- COBOL uses HTTP SOAP to call WBI
- JRules is deployed as a web service



Architecture Details - page 2

- JRules is deployed under WebSphere on a box running Windows 2003 Server
- JRules is deployed as a EJB
- Each component could be replaced with minimal impact to the other components



Metrics

- Common rules are now updated one time and in one place
- JRules and all other architecture components have vendor support
- Run-time performance has improved
 - Rating Rules now run in 0.25 seconds vs. 1.2 seconds before
 - Eligibility Rules Transaction is now less than 2 seconds vs. 8.5 seconds before
- Rules are accessible as web services from any system



Lessons Learned/Best Practices – page 1

- Use the BAL
 - Good use of BAL allows for the Business to review rules without needing a separate document that must be maintained
 - Review the BAL regularly when being developed
- Object Model Design is crucial



Lessons Learned/Best Practices – page 2

- Use ILOG's Professional Services to at least get a head start
- When in the Builder IDE, use the Function Set sparingly for code
- Build a good testing facility to enable faster and more reliable rules testing
 - Business Rules are complex – testing can be difficult and time consuming



Questions?
